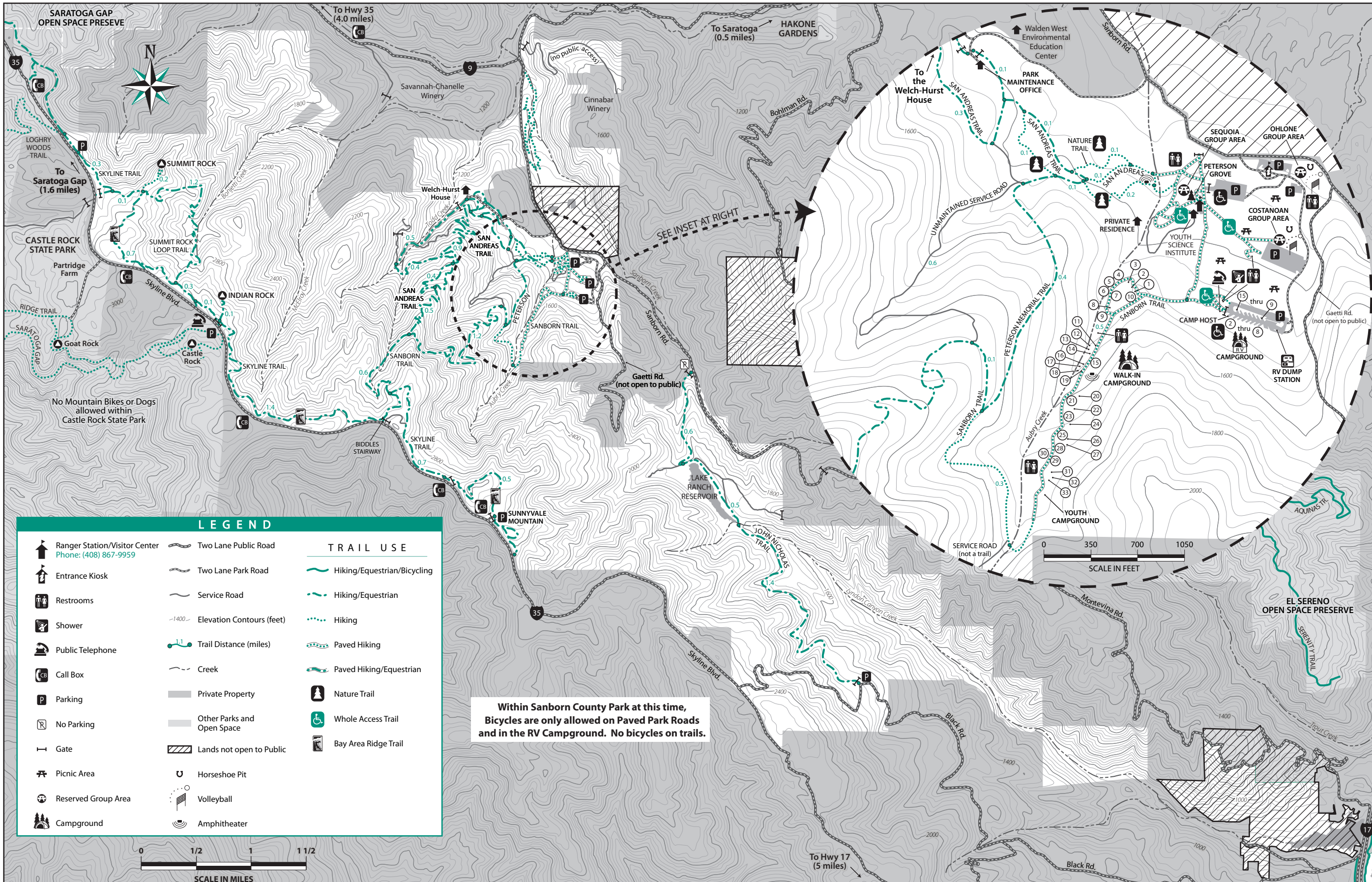


SANBORN COUNTY PARK



TAKE ONLY PHOTOGRAPHS... LEAVE ONLY FOOTPRINTS

Millions of people visit Santa Clara County's regional parks each year. Please help preserve the natural beauty of our parklands and ensure the safety of our visitors by complying with these general rules and any posted regulations.

Vehicles: Observe posted speed limits. Stay on designated roadways and in designated areas. No vehicles in walk-in campground.

Garbage: Place in receptacles provided. Recycling is encouraged.

Dogs/Pets: Allowed on all trails unless marked no access. Must be controlled on a 6-foot (or less) leash at all times.

Fires: Wood fires not allowed unless otherwise posted. Charcoal permitted all year round.

Weapons: Firearms, air guns, archery equipment and paintball guns are prohibited.

Alcohol: Permitted in picnic areas and campgrounds. Not permitted in parking lots.

Swimming & Wading: Prohibited in all lakes, streams, and reservoirs.

Plants & Wildlife: Collection of plant specimens and feeding of birds or animals is not permitted.

SHARING THE TRAILS
Sanborn Park's trails offer recreational opportunities for hikers, joggers, and equestrians. For the safety and protection of all visitors, please adhere to the following trail etiquette guidelines.

Stay on Designated Trails: Horses and bicycles are not allowed on the Whole Access Trail or paved trails. Bicycles allowed on park roads only.

Be Considerate: Yield to faster trail users. Respect everyone's right to use the trail.

Be Aware of Conditions: Hiking or riding when conditions are poor, such as shortly after a rain, should be done with caution.

Plan Ahead: Know your equipment, your ability and where you are going. Carry necessary supplies for changes in weather or other conditions.

ACCESSIBILITY
The majority of the park's facilities meet the Americans with Disabilities Act. A whole access trail is available in the visitor center/day use area. For other specific information or special accommodations, contact the park office.